

Farm Name
Date

In order to complete your Vet Invest report , we have summarised some of the key features of where your vet service and medicine investment has been directed over the last year or so and how that compares with other similar farms. We have also looked at how this spend has changed with time.

Looking at the four quarters ending with quarter 4 of 2017.

Investment over the last four quarters	£57,632.30
Total discount awarded over the last four quarters	£4,544.82
Investment after discount	£53,087.48

Our data suggests that cow numbers* for female cattle
24 months and older is

540

Total milk sold in last four quarters

4,935,700 litres

Milk sold per cow in last four quarters **

9,140.19 litres

Your investment with us is estimated at ***

1.08 Pence per litre

Therefore your estimated investment per cow^j is

£98.31

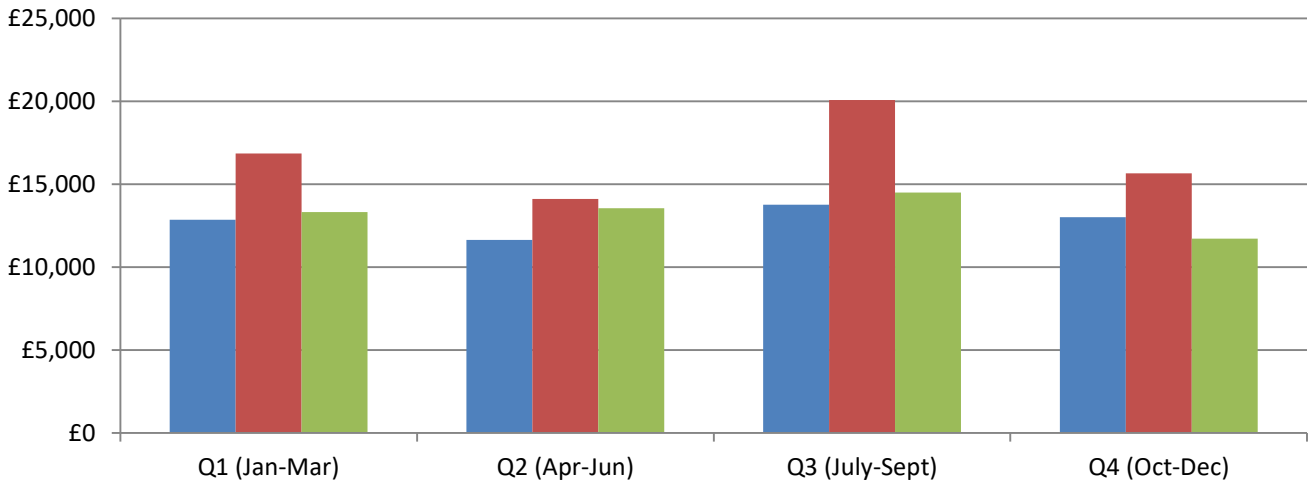
*According to BCMS data.

**To calculate: divide milk sold over last 4 quarters by cow numbers

*** To calculate pence per litre: Multiply the investment **after discount** over last four quarters by 100, then divide by the milk sold figure

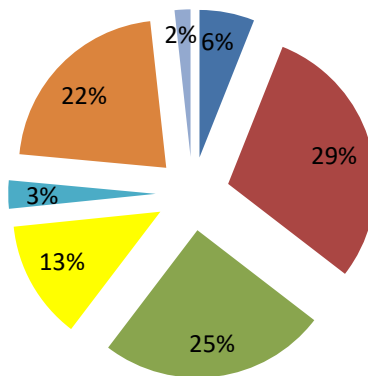
^j after any discount

Comparing investment over the past few years
(Year 3 is the most recent 12 month period)

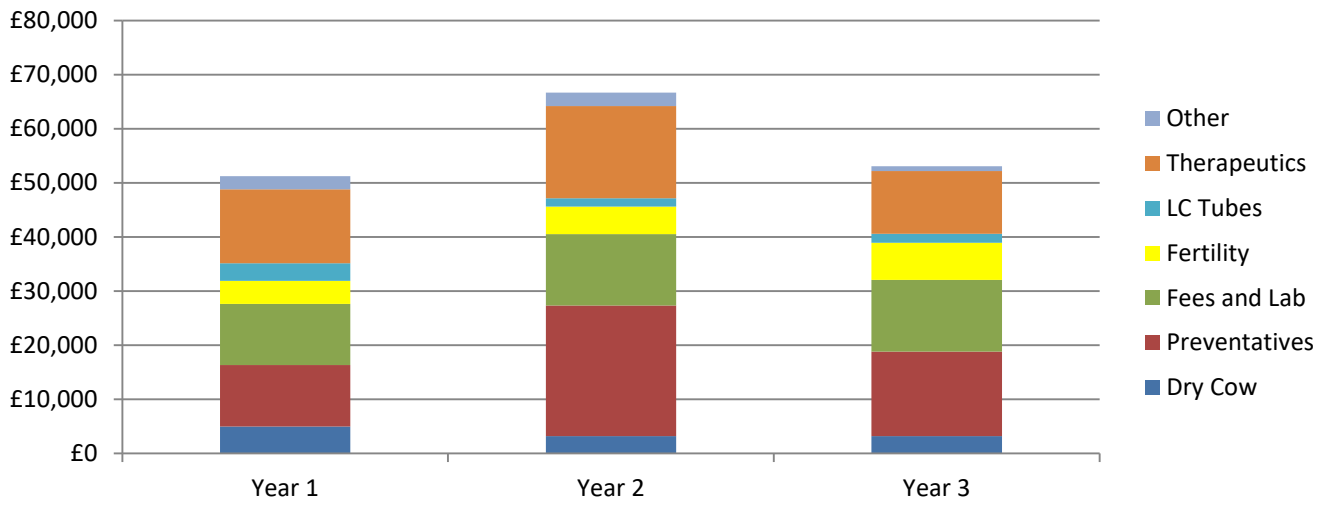


Total investment for different product categories over the most recent year

Investment in groups

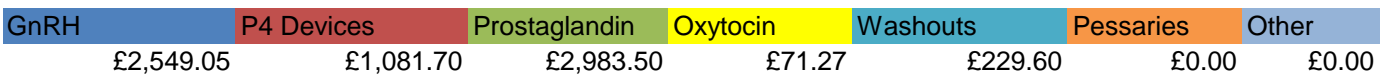
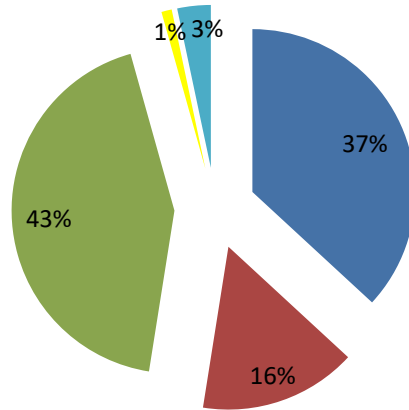


How your investment in product categories compares to the previous years

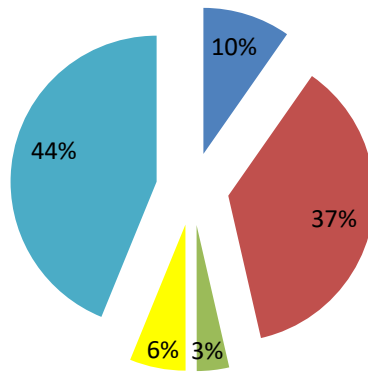


To drill down further on a couple of the categories here is a breakdown for Fertility and Therapeutics

Fertility



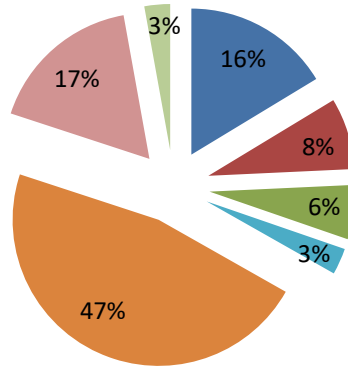
Therapeutics



Other	NSAIDS	Reserve / CIA	Antiprotozoal	Antimicrobial Inj
£1,123.10	£4,244.60	£413.65	£716.40	£5,069.14

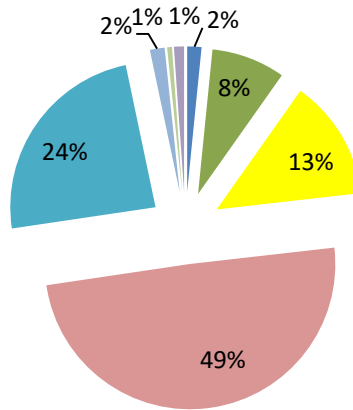
Now here is a drill down on Preventatives and Fees and Lab.

Preventatives



IBR	BVD	Lepto	BRD	Salmonella
£2,550.60	£1,237.50	£940.50	£0.00	£2,673.00
Calf scour	Metabolic	Mastitis	Other	
£455.78	£7,313.40	£0.00	£443.80	

Fees and Lab

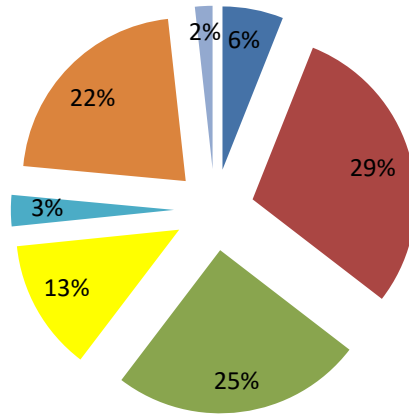


Advisory & Training	Other	Lab	Vet Tech	Fertility	General
£210.00	£0.00	£1,084.50	£1,773.75	£6,540.00	£3,180.00
ET	Surgery	Legislative	Emergency		
£0.00	£216.00	£72.00	£148.00		

The total investment per cow over the four most recent quarters is
 On a per cow basis the investment is split as shown:

£98.31

Per Cow / Per Litre



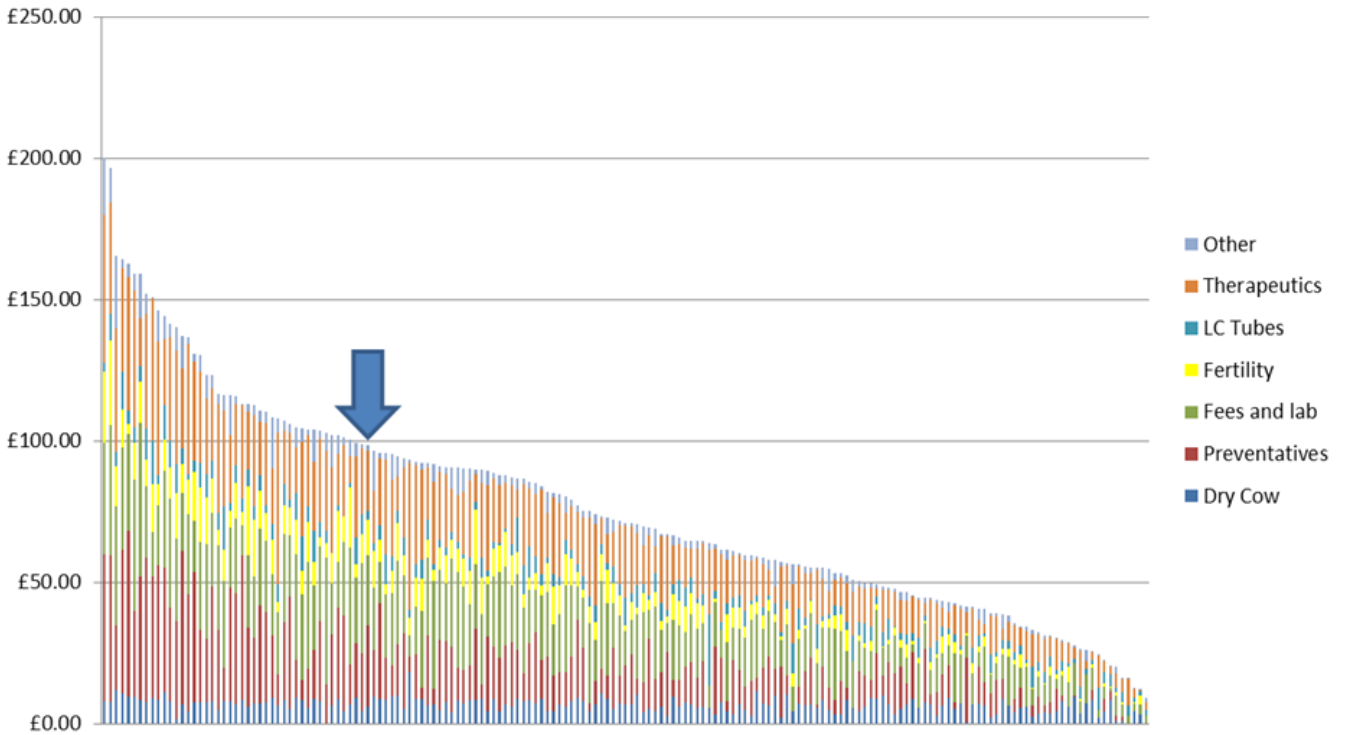
Per cow

Dry Cow	Preventatives	Fees & Lab	Fertility	LC Tubes	Therapeutics	Other
£5.93	£28.92	£24.49	£12.81	£3.04	£21.42	£1.71

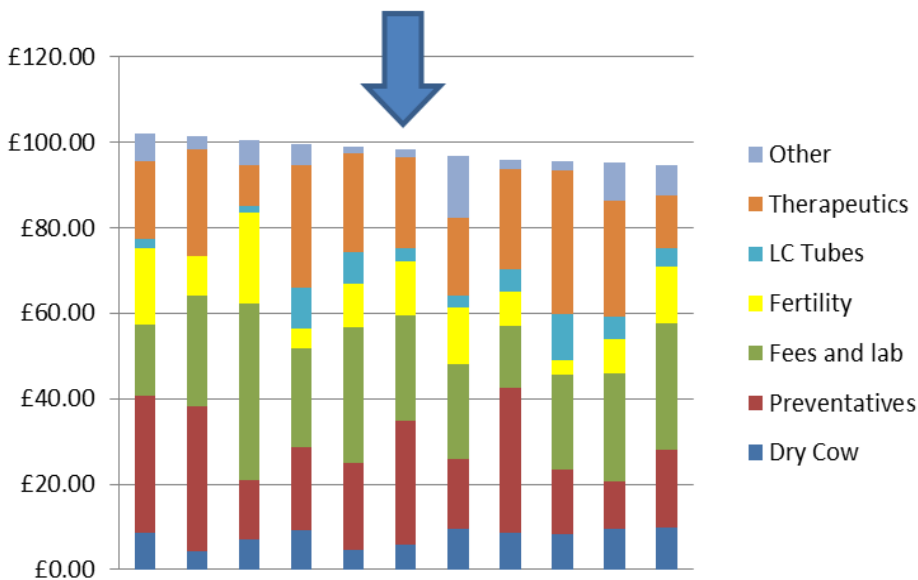
Per litre (pence)

Dry Cow	Preventatives	Fees & Lab	Fertility	LC Tubes	Therapeutics	Other
0.06	0.32	0.27	0.14	0.03	0.23	0.02

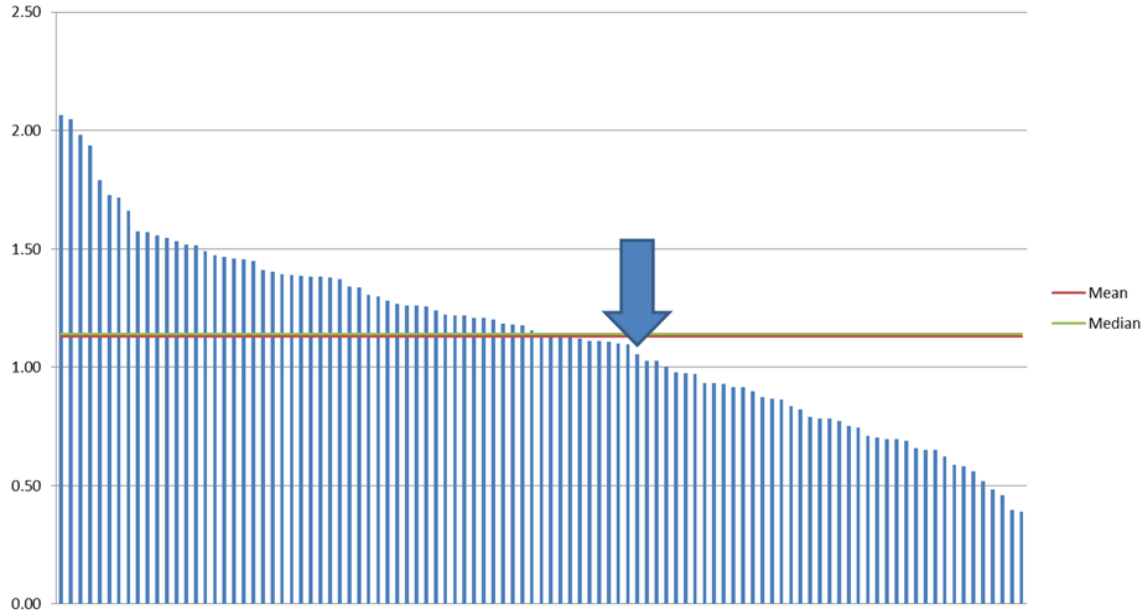
How investment on this farm compares with other similar farms:
 (This benchmarking data was calculated using the average of the last two years worth of data)



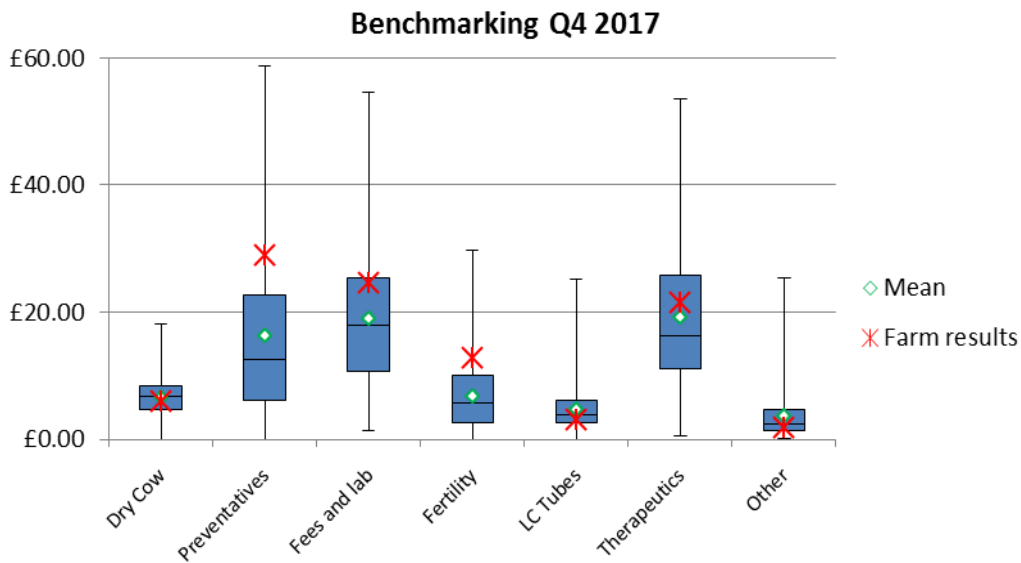
How this investment compares with the five farms on either side:



How your ppl compares with other farms:



Another way to see where your farm sits within other farms



The graphic above illustrates the range of money spent in each product area for all farms in the benchmark group. The 'whisker' lines show the range from maximum to minimum amounts invested in each product category. The blue 'box' shows the range of half the farms either side of the farm with the middle amount invested. There is a line in the middle of the box at the point where the middle farm (median) invests. There is a dot at the average (mean) of all farms.

Your farm's results
per cow

Dry Cow	Preventatives	Fees and Lab	Fertility	LC Tubes	Therapeutics	Other
£5.93	£28.92	£24.49	£12.81	£3.04	£21.42	£1.71

Per litre (pence)

Dry Cow	Preventatives	Fees & Lab	Fertility	LC Tubes	Therapeutics	Other
0.06	0.32	0.27	0.14	0.03	0.23	0.02

