

# Transition Check

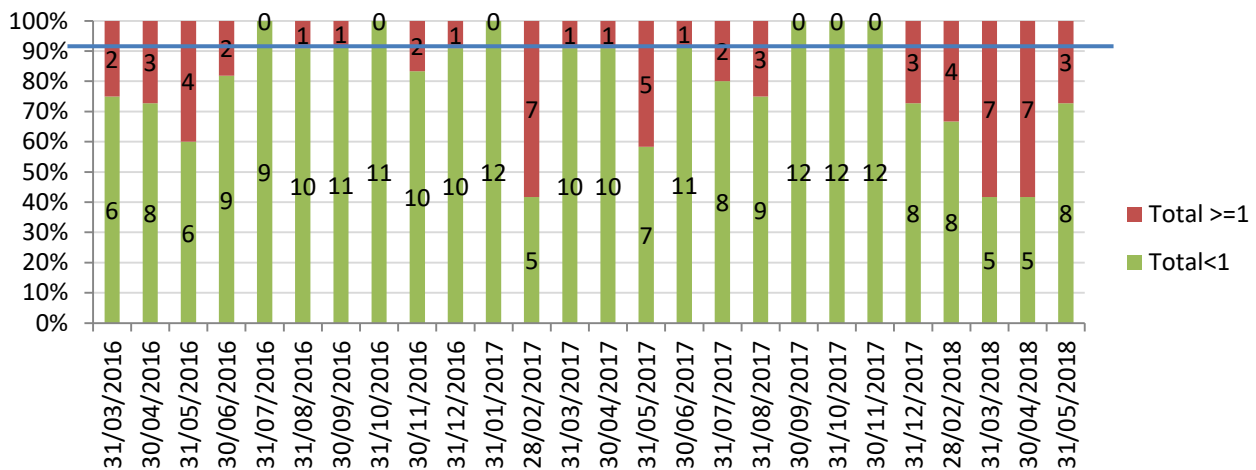
Farm:

This month (report period): **03/05/2018**

## Ketosis monitoring

BHB levels above 1.0mmol/l indicate excessive mobilisation of fat to compensate for a state of negative energy balance. The graph below shows the proportion of cows tested with a result less than 1mmol/l which is shown in green.

### Proportion of fresh cows above and below BHB 1.0



— Target of more than 90% BHB < 1

### Key Points

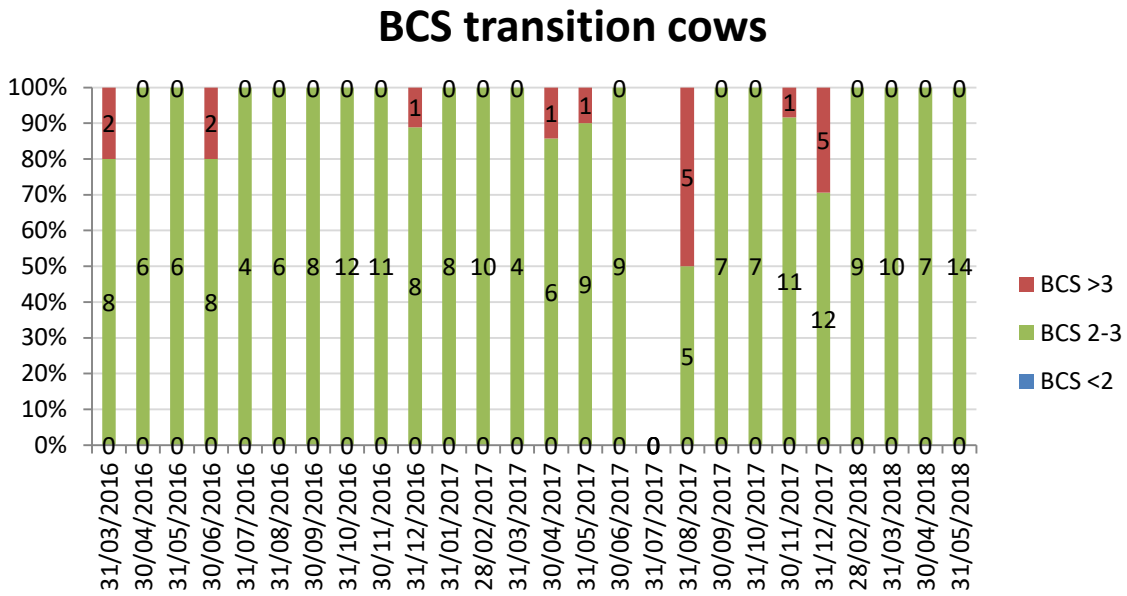
A much better result this month so well done. Three out of eleven cows were high at sampling and one of those was pretty marginal. Its probably a bit early to put this down to the changes we have made but it is certainly promising.

Condition scores as with the last couple of months are on target, so cow condition appears to really well managed.

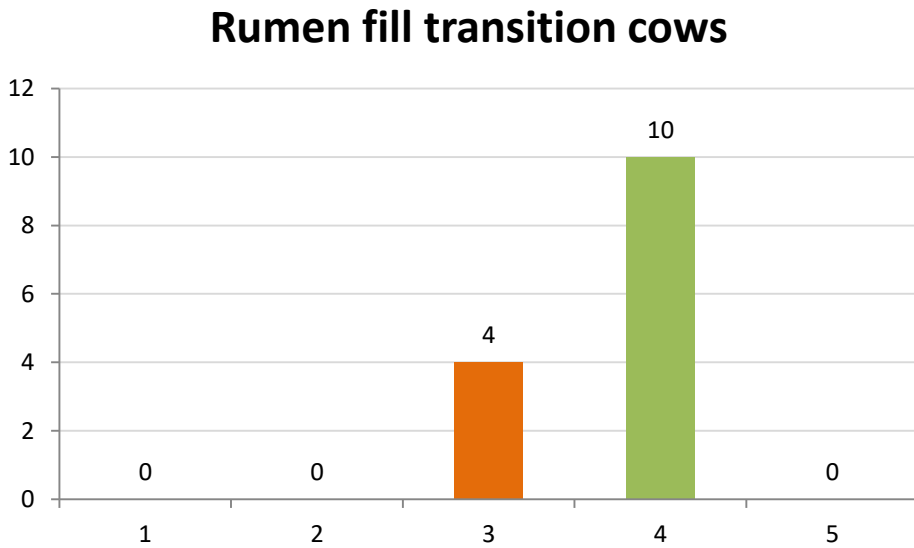
Rumen fills are also much better this month the majority of cows scoring >4 which is great to see.

Hopefully we will continue to see improvements as the current dry cows come through and calve.

**Body condition scores - Dry cows**



**Pre-calving Rumen Fill Results**



**This months BHB results:**

Cow Number	Days in milk when tested	BHB
551	20	1.8
228	23	1.6
251	16	1.1
906	15	0.8
142	22	0.8
222	20	0.8
910	12	0.8
424	20	0.8
523	10	0.6
52	18	0.5
119	20	0.4

**Rumen fill transition cows and BCS far off dry cows:**

Cow Number	BCS
3908	3
928	3
484	2.75
107	2.75
9	2.75
917	2.75
920	2.75
147	2.75
14	2.75
318	2.5
934	2.5

Cow Number	Rumen fill
9	4
147	4
917	4
107	4
484	4
920	4
3908	4
25	4
928	4
14	4
318	3

The following cows have suboptimal BCS:

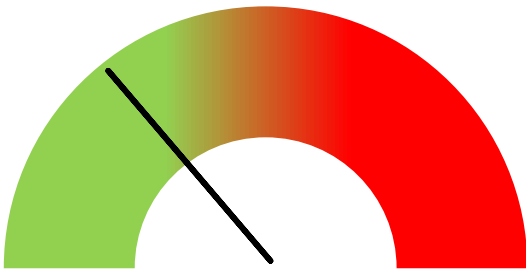
These cows are at an increased risk of ketosis and may be candidates for Kexxtone Bolus treatment.

### Water trough space



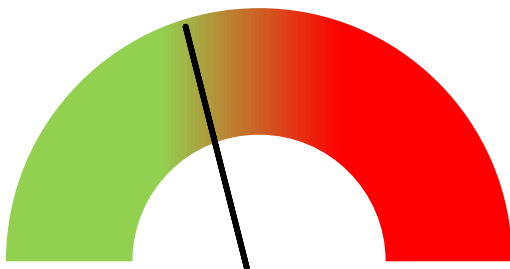
There should be a minimum of 10cm per cow water trough space. Your yard has 2.7m of water trough space available meaning there is enough for 27 cows. Currently there are 14 cows in this group so water availability is adequate.

### Lying area



There is 288 meter squared of laying space which is enough for up to 24 cows. Currently there are 14 cows in this group so the pen is stocked at 58%

### Feed trough space



There should be a minimum of 90cm per cow trough space for transition cows. Currently we are at 83% capacity for the amount of available feed space.



