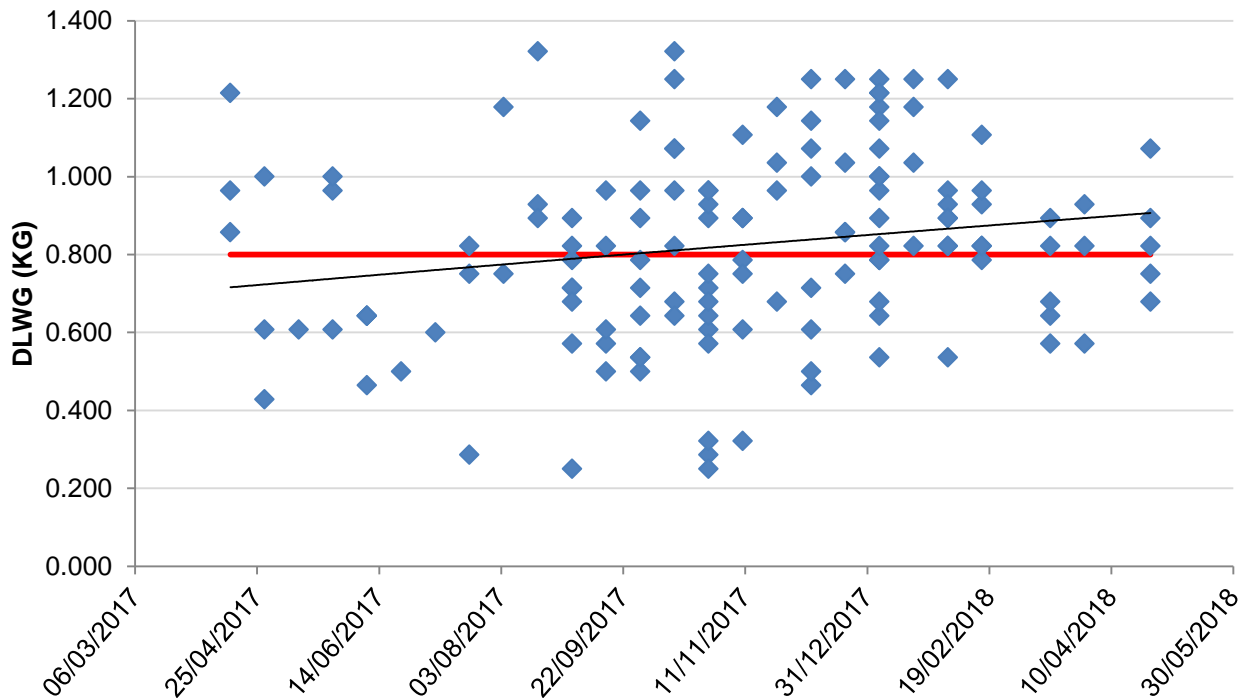


# Growth Check

Farm Name  
Report Date  
Report Period Apr-18  
Target 0.8 Kg

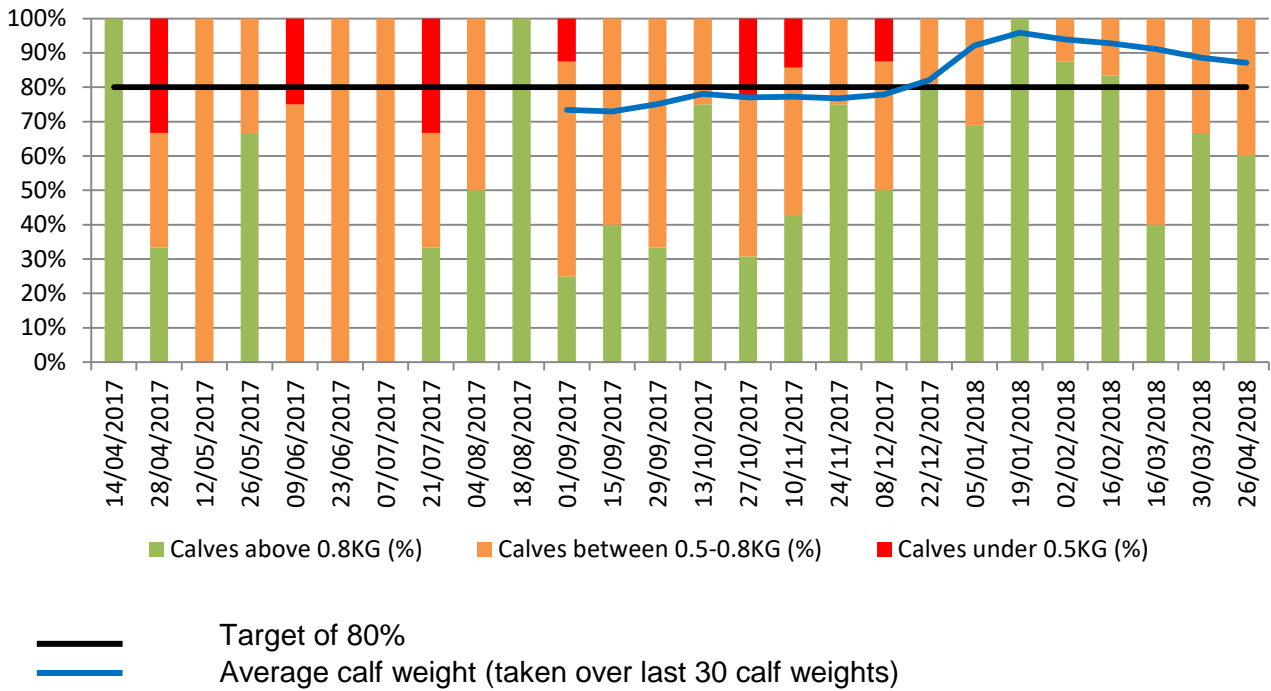


## Comments:

Only five calves were sampled this month and two are below growth rate target. Both of these calves are pretty marginal at 0.75 (4524) and 0.69 (4521), and wouldn't be much cause for concern.

Overall these are good results and based on the rolling average (blue line on graph below) you remain above target of 80% greater than 0.8kg.

Its always difficult to make too many conclusions when only a few calves have been sampled but there has been a general upward trend in results over the past 6 months which is great to see and can hopefully be maintained.



Individual cases below target for report period

Calf ID	DLWG
4521	0.679
4524	0.750

Calf ID	DLWG
---------	------



